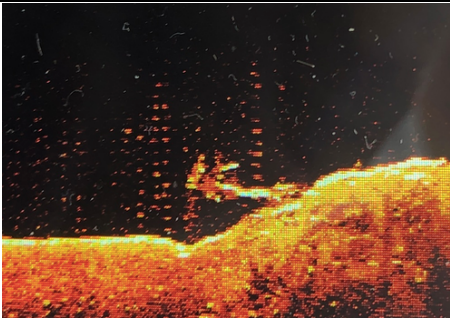
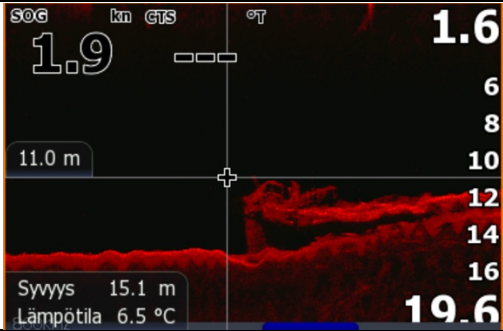



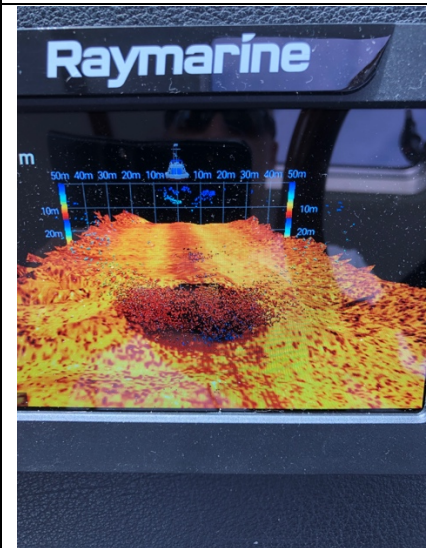
I'd like to share this and ask advise how to get better quality?

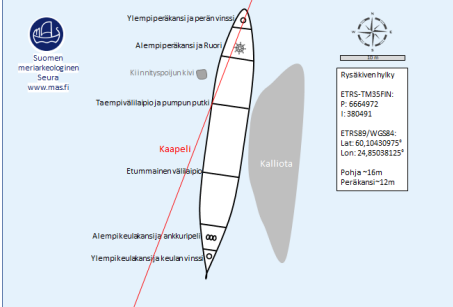
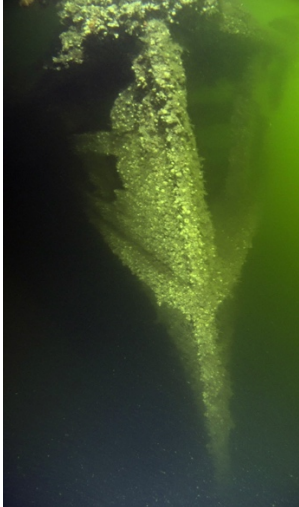
- Raymarine Element HV (standalone) Software rel. 3.10.10
- HV-300THP (mounted on the front of the boat

Picture is scruffy (1,2Mhz or 350khz) and hard to identify

Raymarine SideVision (Wrek 40 meter, Steel)	3rd Party SideVision (Wrek 40 meter, steel)
	
Using 1,2Mhz picture should be sharp and clear under 30 meters, but its not. If dept is more than 6-8 meter 350kHz is only option, but wrech is still hard to identify.	Clear picture
	

3D mode cannot analyze and draw wreck, but show "points".



Size of Wreck	Real Picture
 <p>Diagram illustrating the size and structure of the wreck, showing the hull, keel, and various sections. The diagram includes labels for the upper and lower parts of the hull, the keel, and the main body of the ship. A technical data box provides the following information:</p> <ul style="list-style-type: none"> Rysäken/Hylky ETRS-TM35FIN: P: 6664972 I: 380491 ETRS89/WGS84: Lat: 60.10430975° Lon: 24.85038125° Pohja -16m Peräksä -12m <p>Lenght 40 meters Dept 16m (some part only 5 meter)</p>	

It looks Element HV cannot analyze data what it get from sensor.