

Raymarine Plotter Sync





Enable WiFi on Raymarine MFD

As of Lighthouse 2 version 19 WiFi is default on.

Setup > Wireless Connections > WiFi





Wi-Fi Sharing



Wifi > WiFi Sharing >



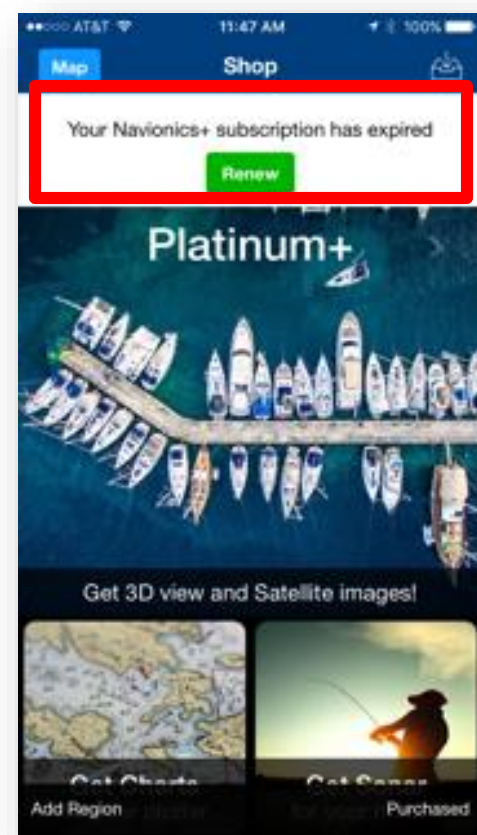
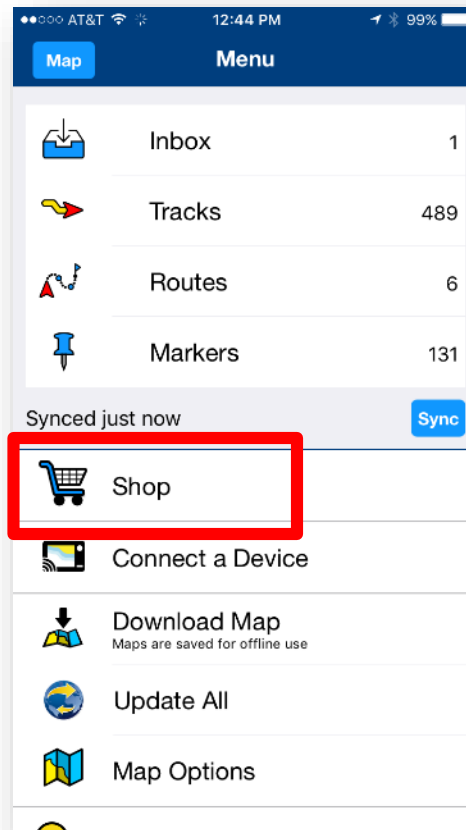
User can enable Wifi, set names and security settings.



Navionics Boating App

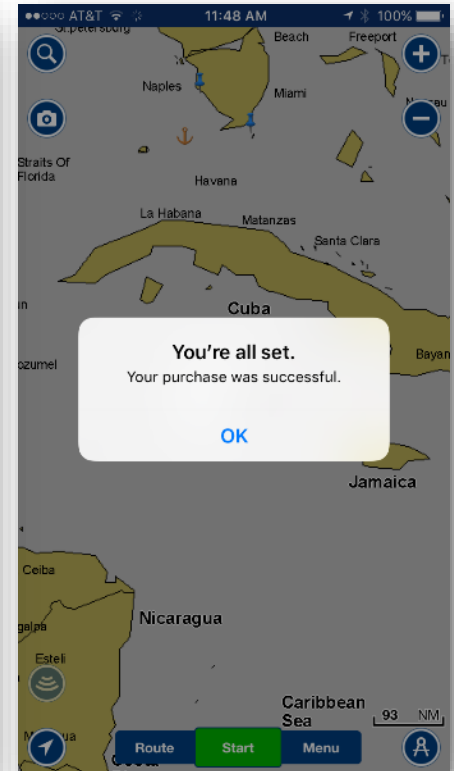
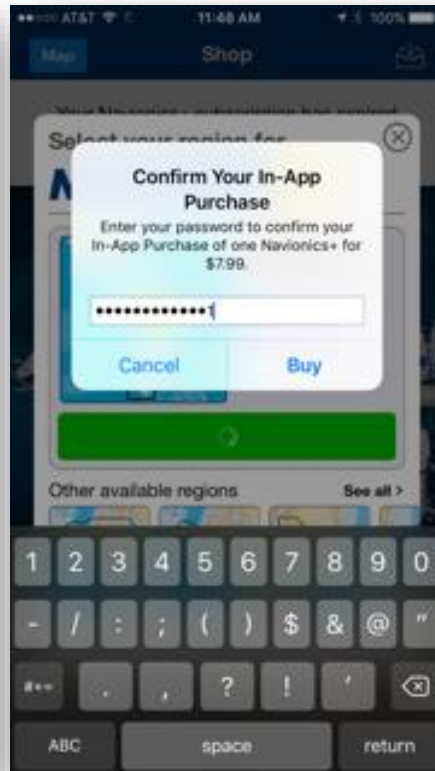
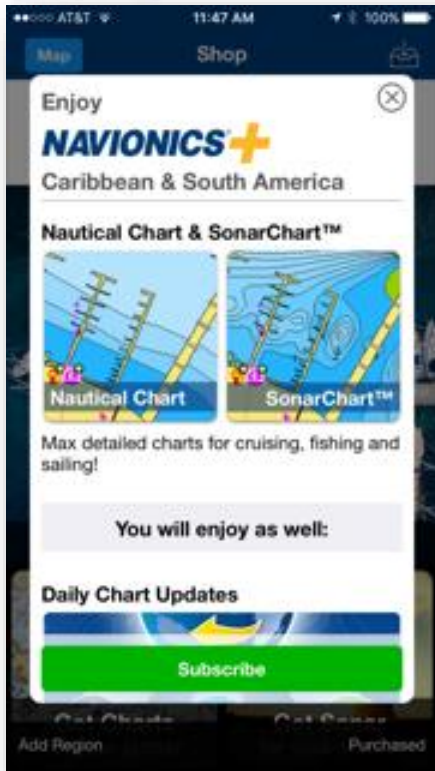
- Example using Boating Carrib & South America
- User must have an Active Subscription

New Users can skip this step, existing users may need to renew Subscription Renewal example below.





Renewal Purchase Flow



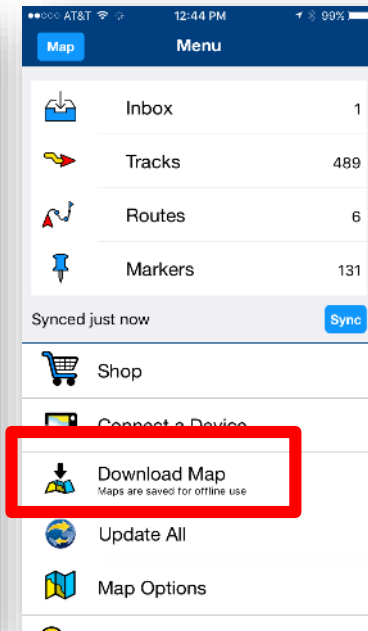
Renewal Banner > Subscribe > Apple ID > Confirmation



Download Charts

Before connecting to MFD Wifi, download chart details for desired area. Keep in mind, for chart updates to complete the downloaded app data must fall within the Plotter card coverage area. Overlapping coverage is allowed.

MENU > Download Map > Select area / Download
Bright area should indicate successful download of coverage





Wifi Connection on Mobile Device

User can enable Wifi within device settings.
With MFD Wifi ON, user can select the MFD WiFi

Instructions In App

Bypass App direct to Device Settings

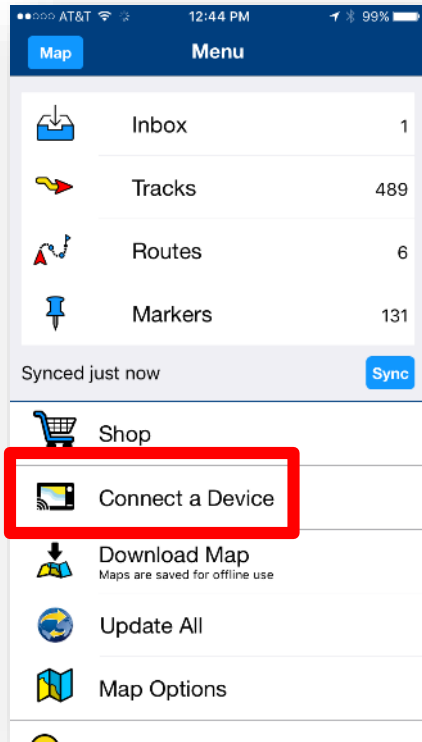
The process is illustrated through four sequential screenshots:

- App Menu:** The app's main menu is shown. The 'Connect a Device' option is highlighted with a red box.
- Connect a Device Screen:** The 'Connect a Device' screen displays the following instructions:
 1. Activate the Wi-Fi of your device
 2. Go to mobile device Settings
 3. Open the Wi-Fi section
 4. Select the device network
- Settings App:** The device's Settings app is open, and the 'Wi-Fi' option is selected.
- Wi-Fi Network Selection:** The 'Wi-Fi' settings screen shows the network 'RM E62354 1210706' selected and highlighted with a red box.



Connect a Device Menu

FYI – going forward this will be the menu area to manage devices & initiate Plotter Sync multiple times should you want to sync throughout the day while the app is running and connected to the MFD.

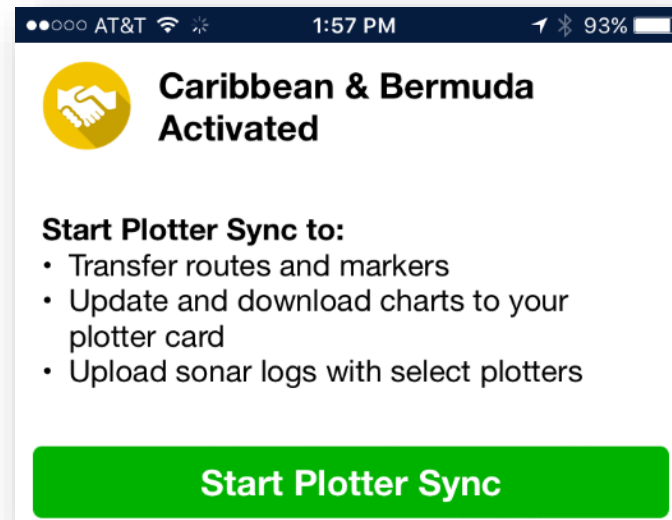




Plotter Sync Functions

Now that you have successfully connected an app with an Active Subscription

- **Activate New Card or Purchase Card Subscription Renewal**
- **Transfer Sonar Logs**
- **Transfer Routes**
- **Transfer Markers**





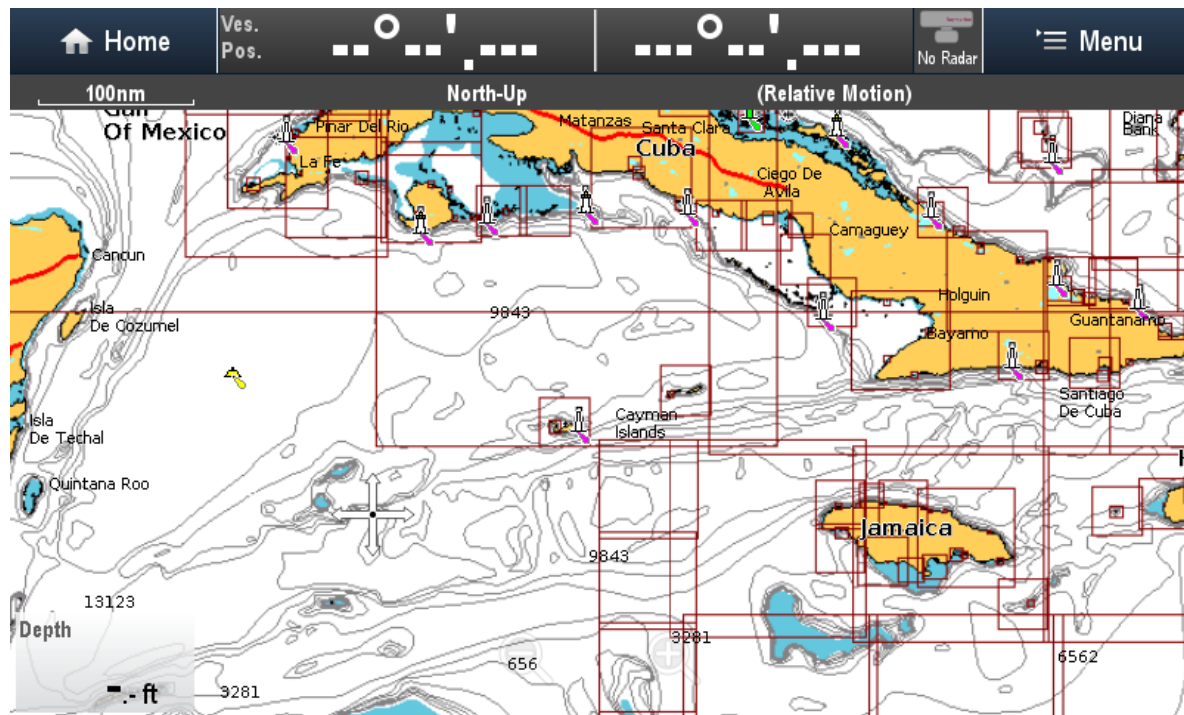
Activate New Card

Example using Boating Carrib & South America app and a 908P+ card for An overlapping coverage region.

On Mobile you should see a downloaded coverage

On MFD you should see the new card inserted

Ready to start... Connect to MFD Wifi and open App

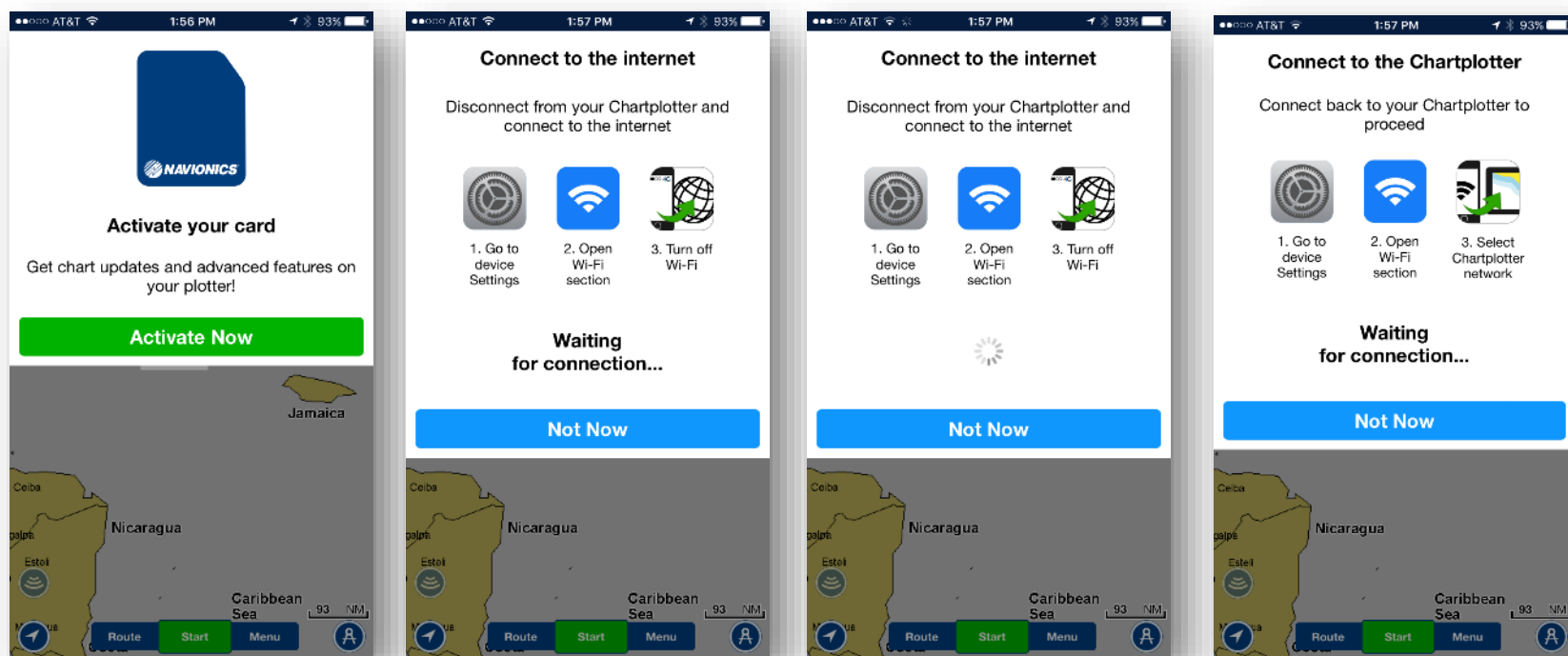




Activate New Card

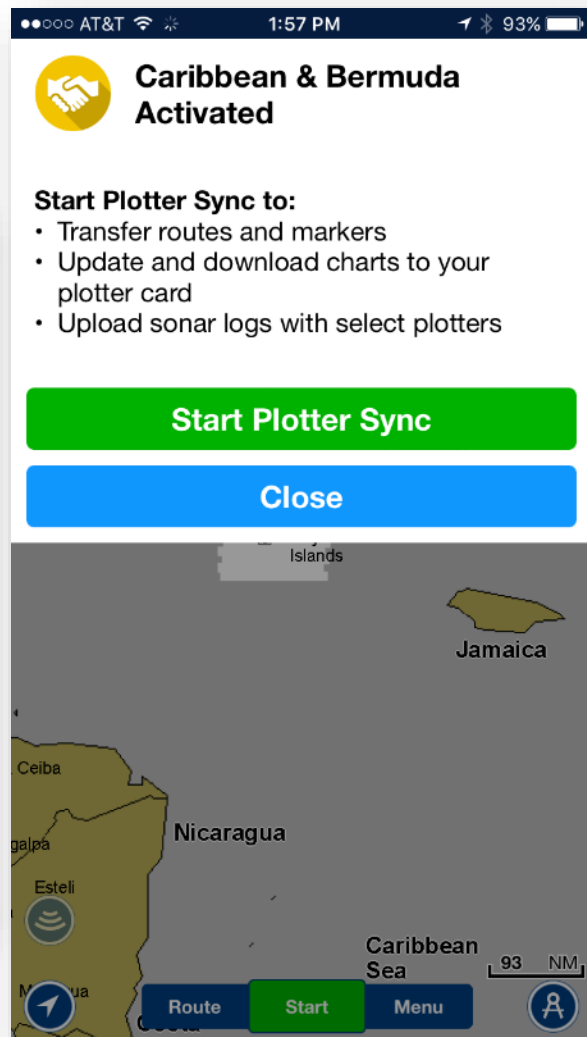
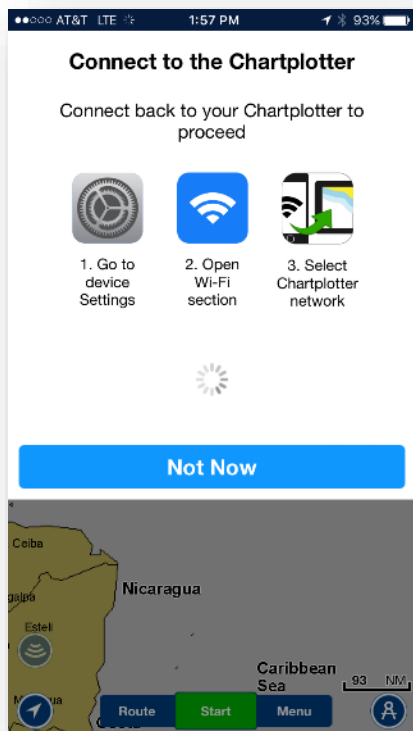
Once App is open, MFD will be recognized immediately and Sync will start. Activation message will fire.

- **Connect to Internet** – This means the app has read the card and ready to check eligibility against Navionics servers.
 - Exit app to mobile settings, reconnect to the cell network or home wifi, return to app.
- **Connect to Chartplotter** – The app has successfully initialized the card with Navionics servers, ready to drive plotter sync
 - Exit app to mobile settings, reconnect to MFD wifi, return to app.





Activate New Card



New card has been activated.
You may now start Plotter Sync

Card is now eligible for Advanced Features:

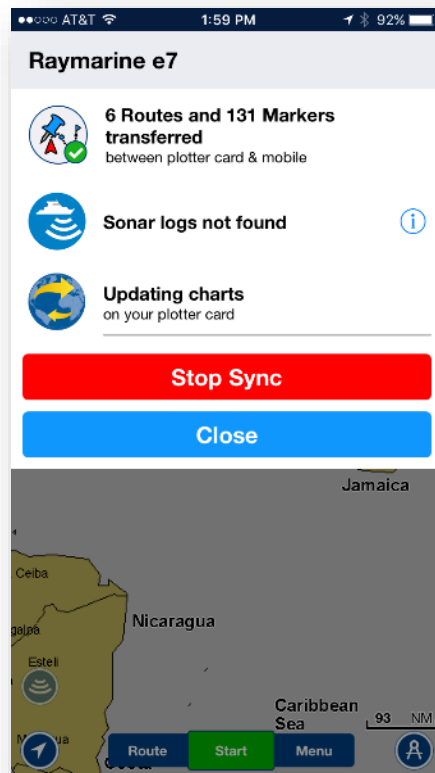
- Dock 2 Dock Autorouting
- SonarChart Live
- Advanced Map Options
- Chart Updates



Transfer Sonar Logs

**Sonar Log Transfer is the first step of P-sync.
If no logs are found this step will be skipped.**

You do not need an active subscription on card or mobile to transfer logs. This is the exception to the subscription rule.



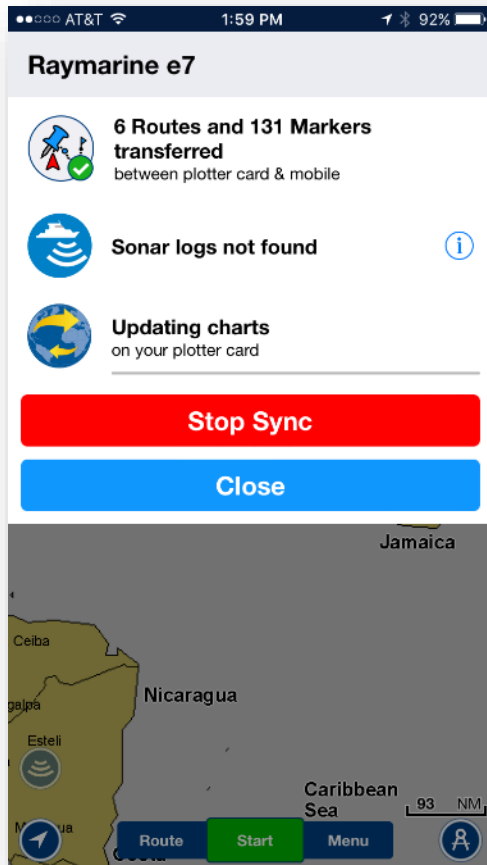


Transfer Routes & Markers

Markers = Waypoints

Routes & Markers on MFD will be transferred to the App Archive

Routes & Markers on the App will be saved as a GPX file and placed on the Navionics Card for retrieval on MFD.



Note: You will need to retrieve GPX file from the Navionics card to view on MFD. You may need to unhide routes after transfer to view them. MFD waypoint symbols are not maintained in app.

Routes in app have a 200 wpt. Limit
App has a Marker limit of 1,000.

MFD Routes & Markers need to be saved as GPX to Card before transfer!



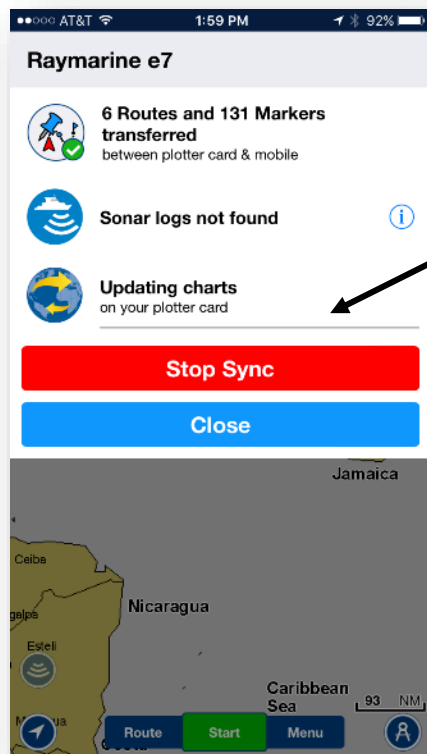
Chart Updates

Depending on the amount of data to be transferred (meaning the size of the chart coverage demand), this may be the most time consuming part of plotter sync. The app will update 100% of downloaded coverage that corresponds within the MFD card coverage area.

For this example we used a small section of Cayman islands.

Status Bar under the App message indicates progress.

Progress also indicated by portion of Pie on app home screen.

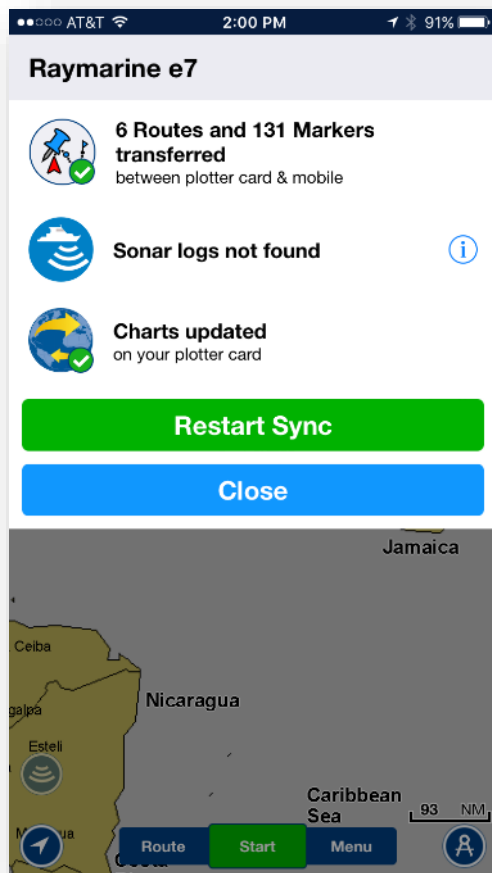




Plotter Sync Completed

Upon completion you will see a Green Check Mark next to completed transfers as well as on the Status wheel on home screen.

If you lose the P-sync status menu at any point, tapping the Status wheel will return the menu. Wheel will disappear 5 seconds after completion.





Other Useful Info

- **Device Connected Menu**
- **Chart Updates Success Indicator**
- **Overlapping Chart area between Mobile app and Plotter Card**
- **Retrieving Routes & Markers from card (to view after Plotter Sync)**
- **Saving Routes & Markets to card (needed prior to plotter sync)**
- **Troubleshooting**



Device Connected Menu

From this menu one can manage Plotter Sync functions or view status of most recent transactions and cards managed.

Choosing the exact function for a specific purpose will increase speed of Plotter Sync. If you need to manually start a Sync again, you can do so here.

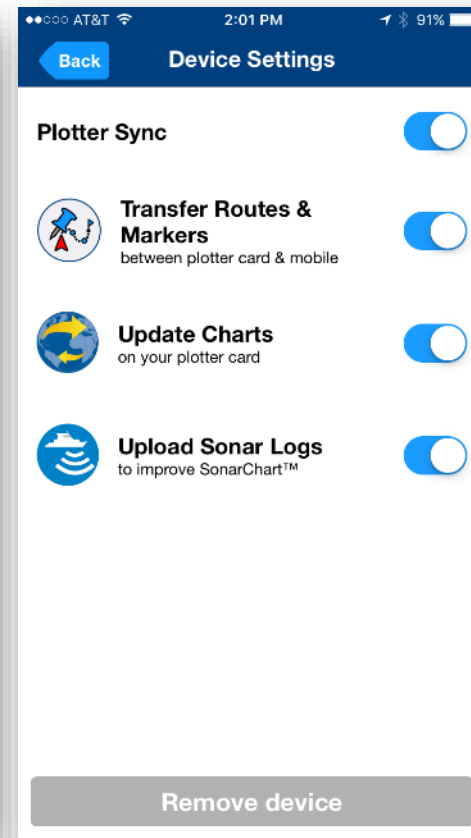
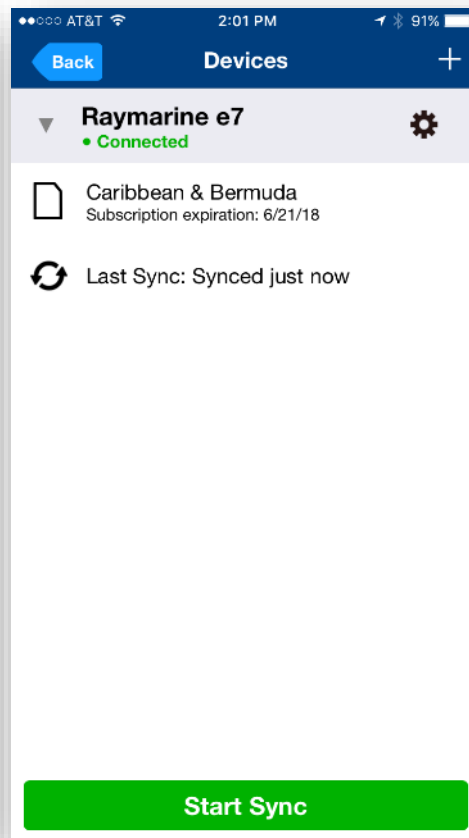
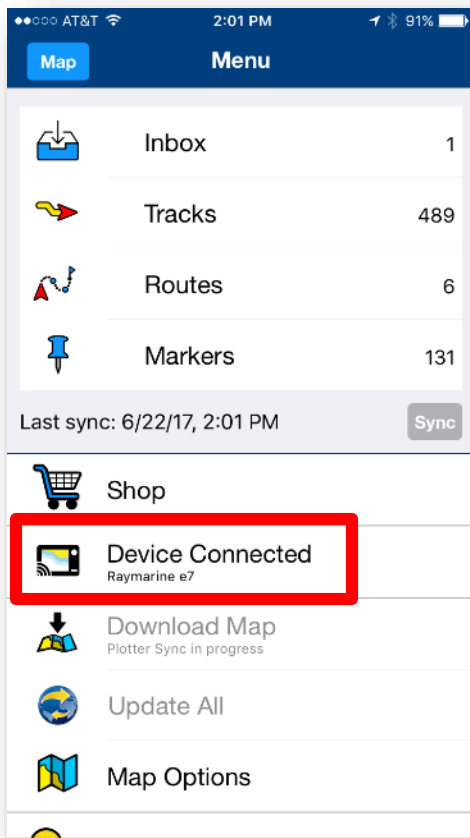
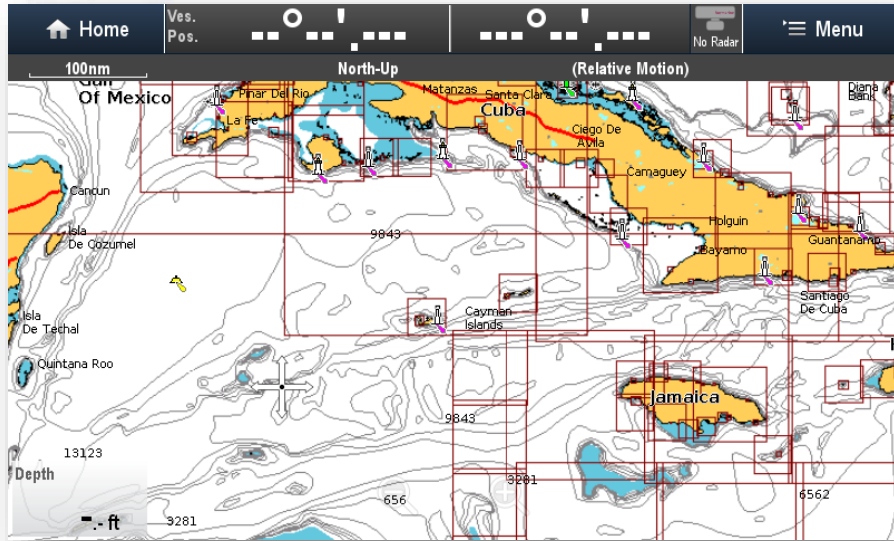
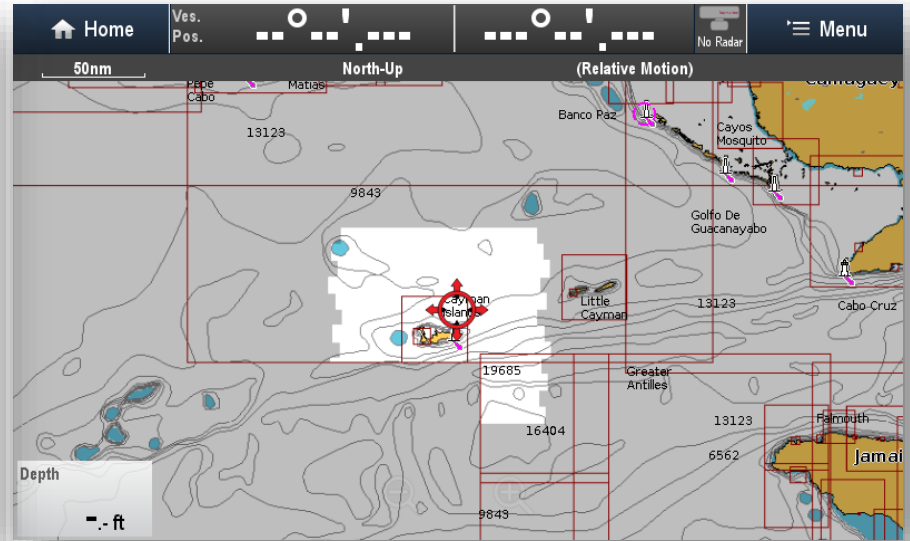




Chart Updates Success Indicator



Before Updates



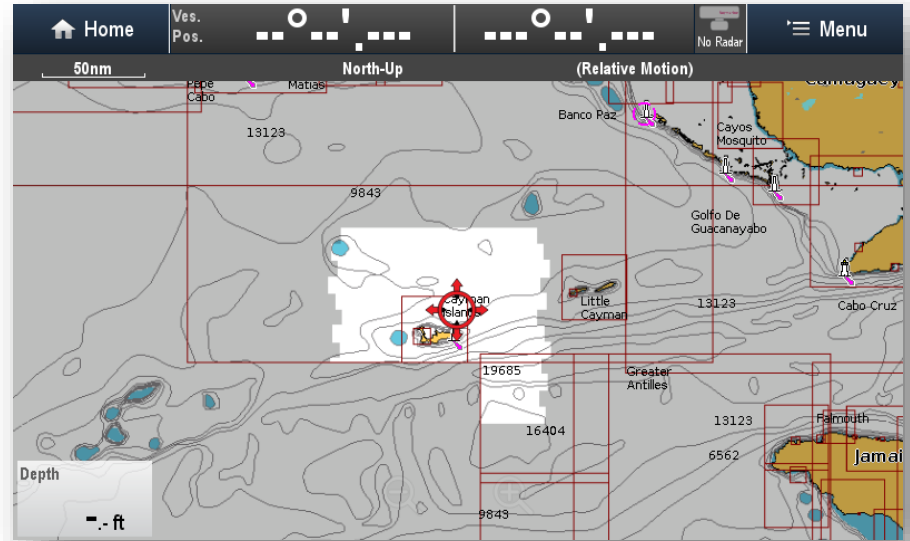
After Updates

Screen behavior is the same as the Navionics app. The surrounding chart area will Darken (grey) and updated areas will be bright.





Overlapping Chart Area



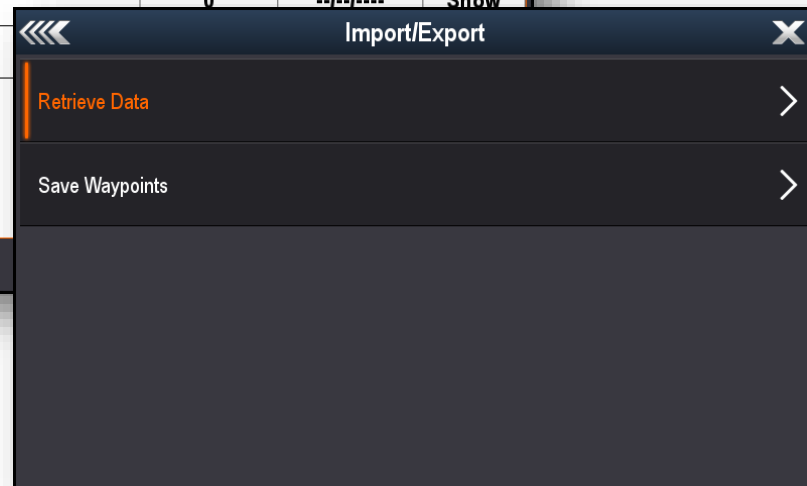
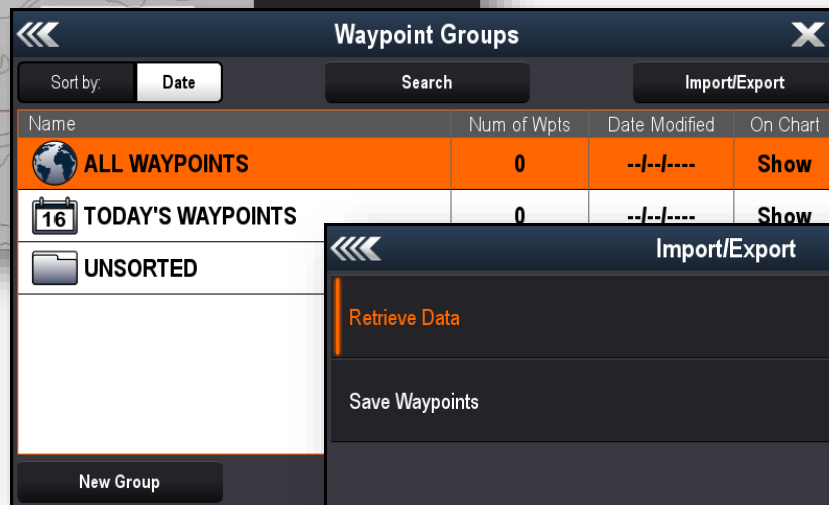
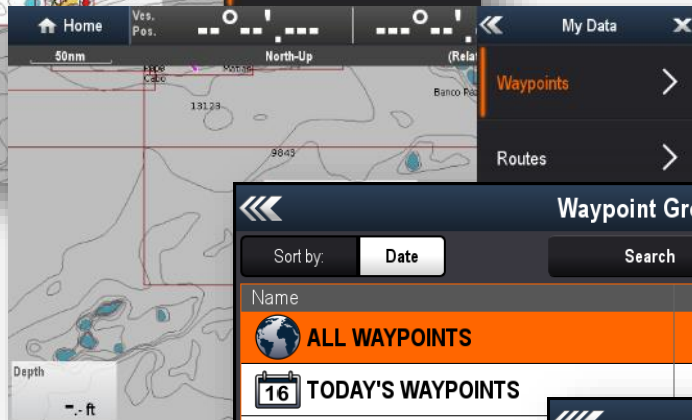
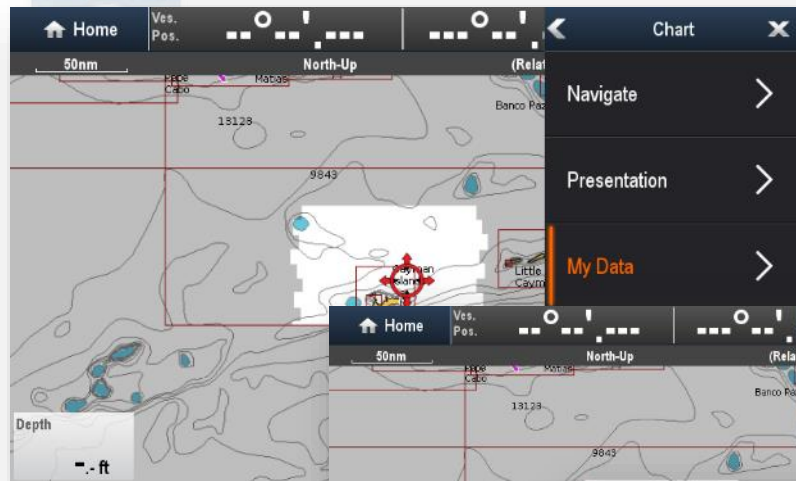
After Updates

In this example, the updated area (bright) does not match. This is because the App coverage is all of Caribbean and South America while the card 908P+ coverage Does not cover South America. Red Chart boundaries on MFD indicate 908P+ chart coverage. As a result, updates transfer within the Chart coverage ONLY.



Retrieving Routes & Markers From Card

MENU > My Data > Waypoints > Import/Export > Retrieve

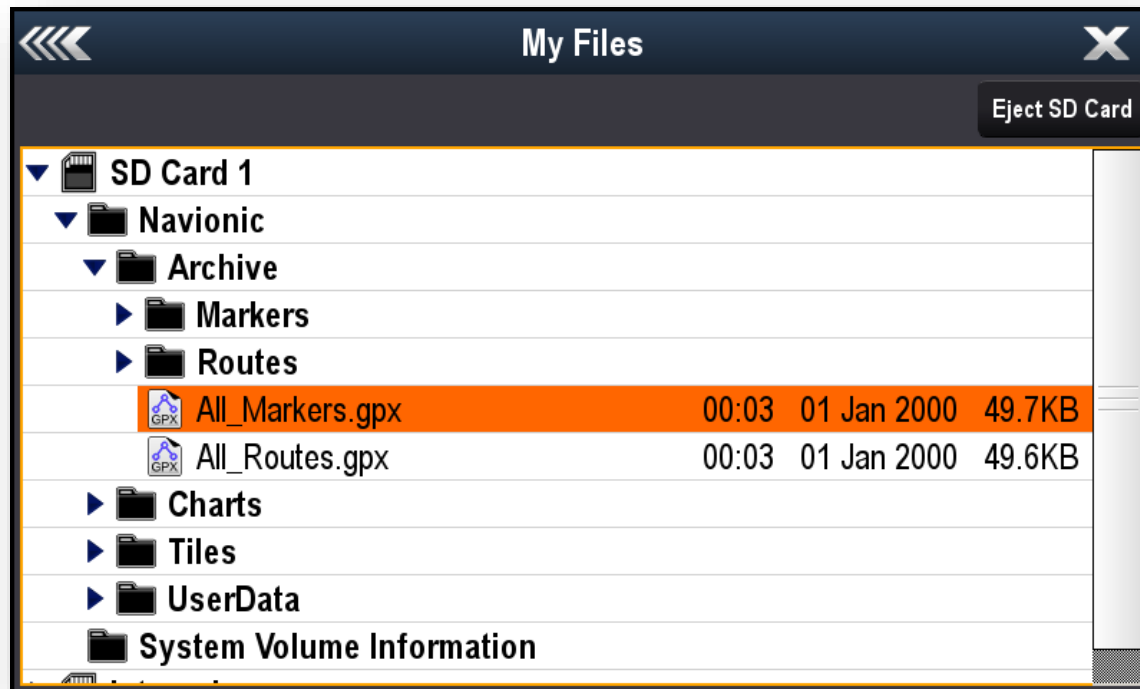




Retrieving Routes & Markers From Card

Within the Card folders choose Archive to view GPX files. Load from the card.

Route or Marker folder does not matter, just be sure to load the needed GPX file.

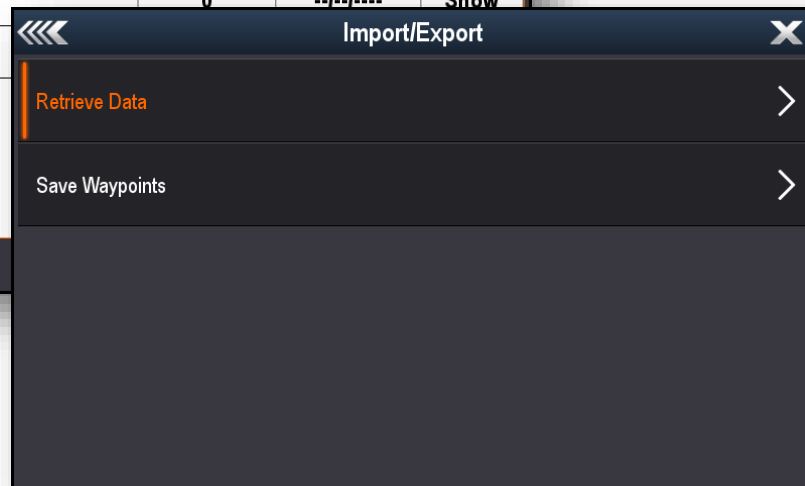
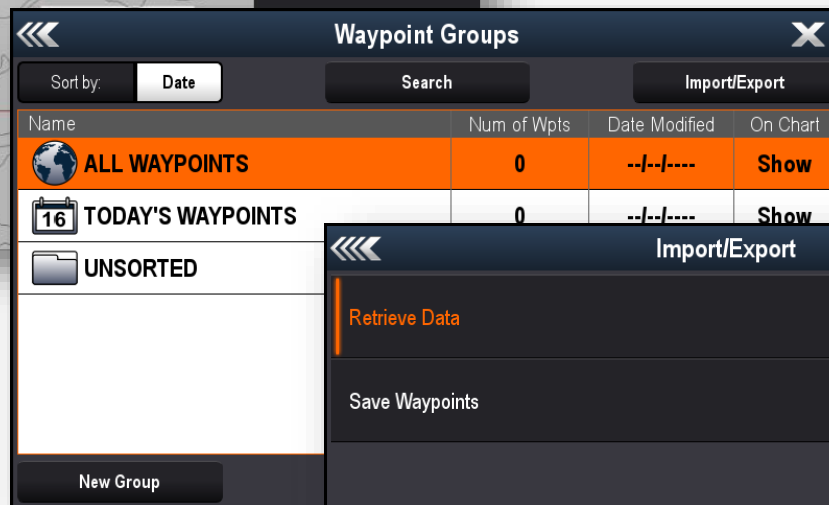
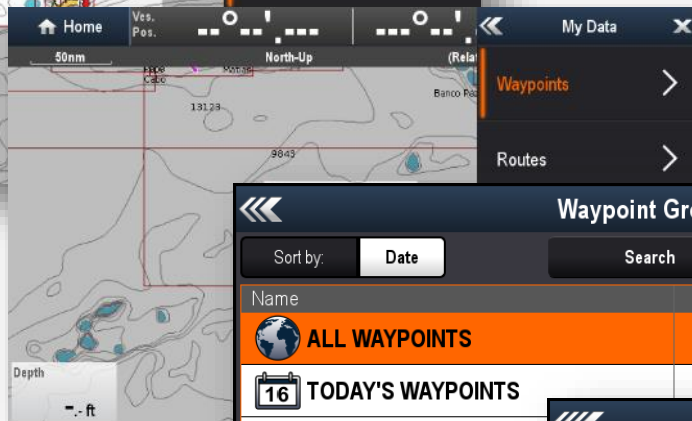
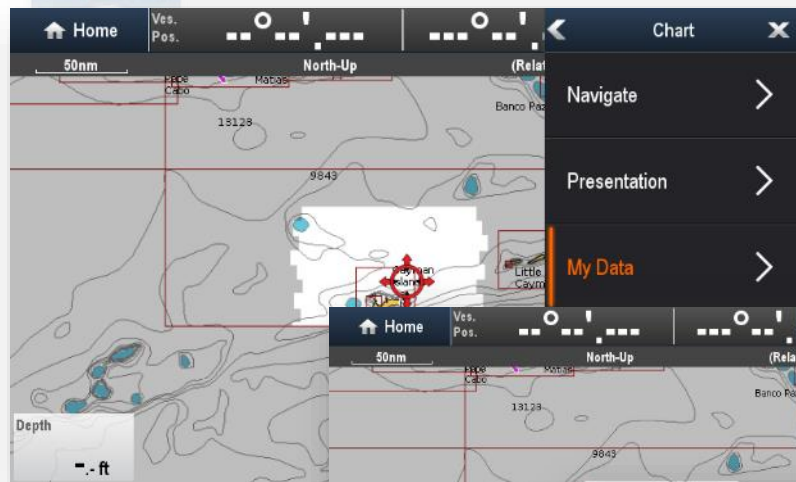




Saving Routes & Markers To Card

MENU > My Data > Waypoints >
Import/Export > Save Waypoints > Save to Card

Note: Do the same from the Routes option





Troubleshooting Tips

#1 – Mobile App Subscription. This must be Active. Purchase new app, or Renew Existing.

#2 – Card Subscription – Must be Activated or Renewed. MFD messaging should indicate, can be purchased through mobile device or PC (Navionics Chart Installer via Navionics.com)

#3 – GPS fix: Plotter must have acquired a recent GPS fix to establish date/time. If demonstrated at dealer level, you must get a fix for Plotter Sync will not activate the card subscription.

#4 – Can't find Markers or Routes on plotter: need to retrieve from card after sync.

#5 – Can't find Markers or Routes on Mobile: Need to Export to card prior to sync