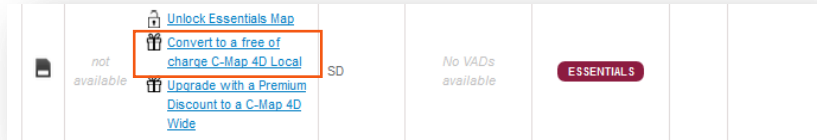




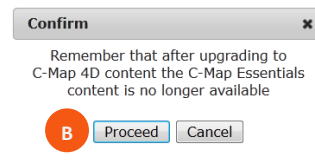
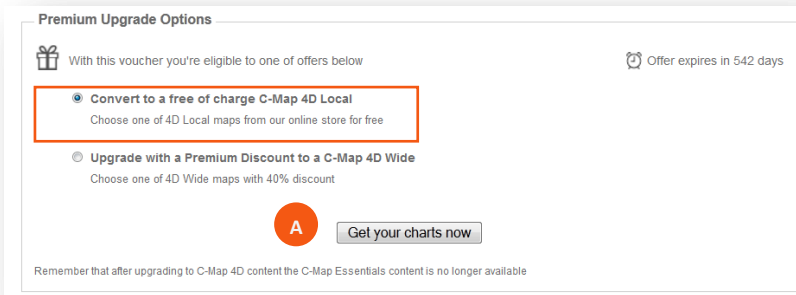
CONVERT C-MAP ESSENTIALS CARD TO A FREE 4D LOCAL COVERAGE AREA

1. After registering the C-MAP ESSENTIALS card, go to YOUR MAPS and select **CONVERT TO A FREE 4D LOCAL** chart.

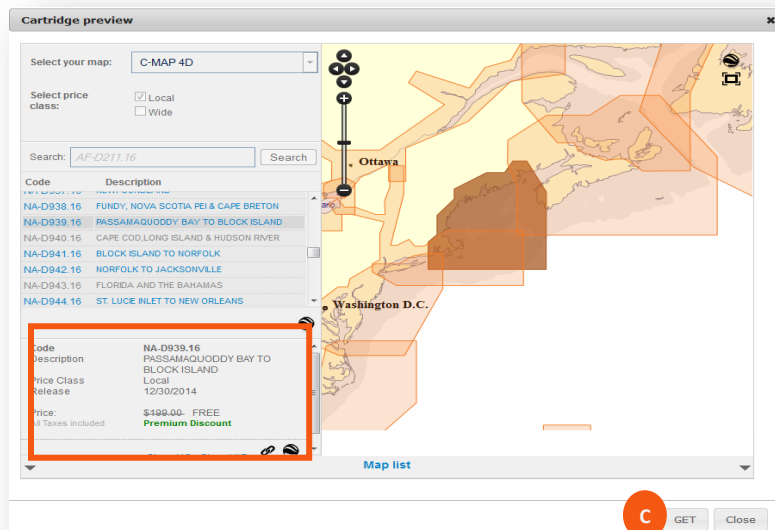


2. Under 'Premium Upgrade Options' choose **CONVERT** then click on **GET YOUR CHARTS NOW (A)**.

*Note: Upgrading to a C-MAP 4D LOCAL coverage area will overwrite the Essentials data. Click **PROCEED (B)** to launch the cartridge preview map or **CANCEL** to choose another option.*



3. Using the **CARTRIDGE PREVIEW** map, locate the desired chart coverage area then choose **GET (C)**. *Note: Only select **GET (C)** once you are sure of the coverage area. The selected chart cannot be changed and all **ESSENTIALS** chart data will be overwritten. The price listed will include the premium discount as **FREE**.*





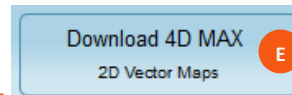
Maps Manager will launch showing the selected chart **ON THE CLOUD**.

For Raymarine MFDs choose from **(D)**:

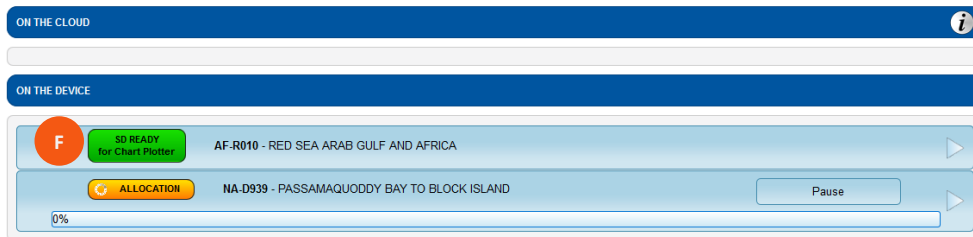


- **DOWNLOAD 4D MAX** – data contains only 2D vector maps.
- **DOWNLOAD 4D MAX+** - data contains 2D & 3D vector, Dynamic Raster & Satellite maps.

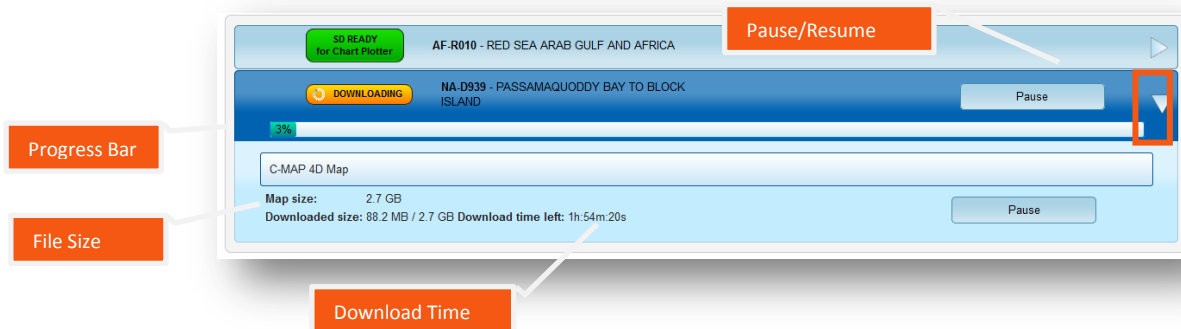
For Raymarine Dragonfly select **DOWNLOAD 4D MAX (E)**.



4. After selecting download, the chart will move to **ON THE DEVICE (F)** - starting the process of overwriting the ESSENTIALS data. *Note: both the Essentials chart title and the LOCAL chart will appear ON THE DEVICE until the programming process is complete.*



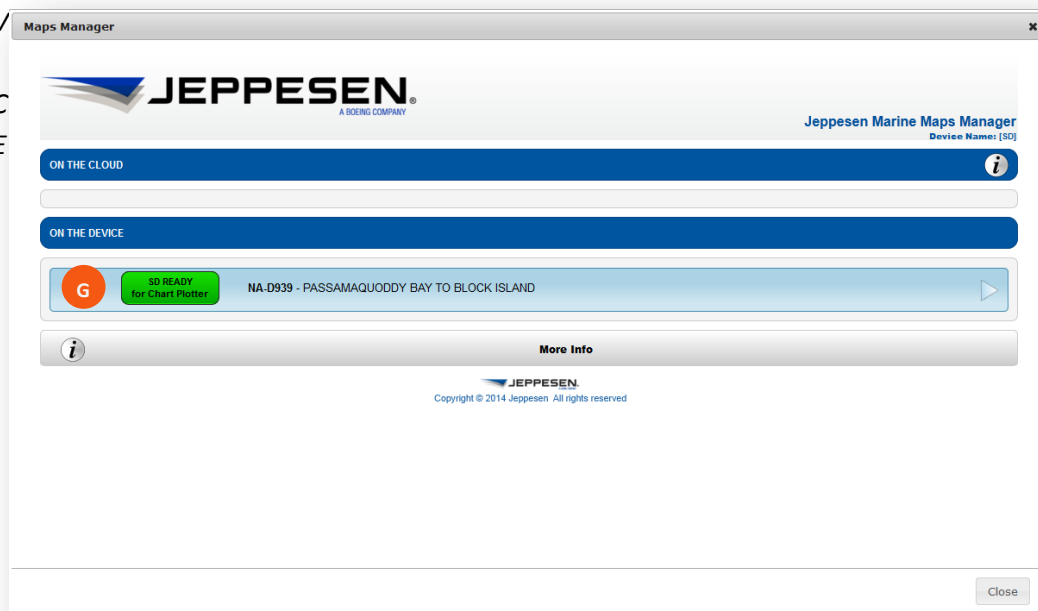
The progress bar will show download percentage completed. The download can be **PAUSED** and **RESUMED** at anytime. Click on the **arrow** to view additional download details including file size and remaining download time.





- Once the download is completed, the C-MAP 4D chart will show as **READY FOR CHART PLOTTER (G)** under ON THE DEVICE. The SD card can now be inserted in to the Raymarine chartplotter. *Note: The C-MAP Essentials chart data will no longer be shown under ON THE*

D
E
V
I
C
E
.



Country	Phone	E-Mail
Italy, Spain, Portugal, France, Croatia, Turkey, Holland, Belgium, Greece and other European countries not listed below.	+39 0585 794 800	EU-customersupport@c-map.com
UK & Ireland		
Germany, Austria, Switzerland		
Poland		
Norway, Denmark, Iceland, Greenland	+47 51 46 47 99	RU-lightmarine@c-map.com
Sweden, Finland	+39 0585 794 800	
Africa & Middle East	+7 812 327 9894	
Russia	+61 2 98 08 6200	
Asia and Australia	Toll free: +1 800 424 2627	apac-customersupport@c-map.com
The Americas and Caribbean		US-customersupport@c-map.com