

USED ON:

A

B

C

D

E

F

G

H

A

B

C

D

E

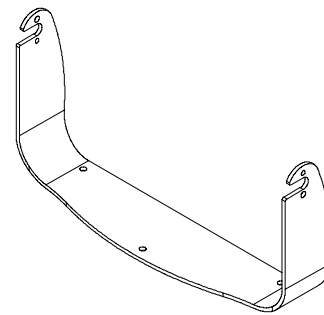
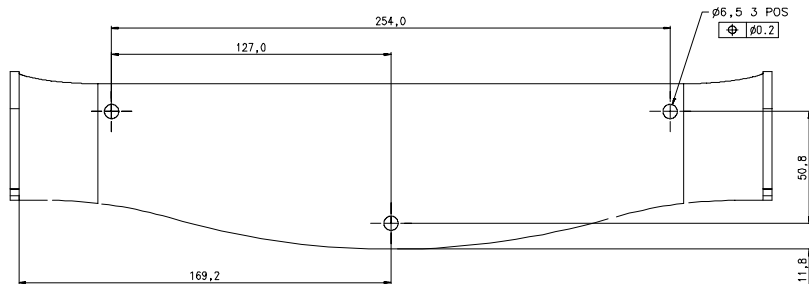
F

G

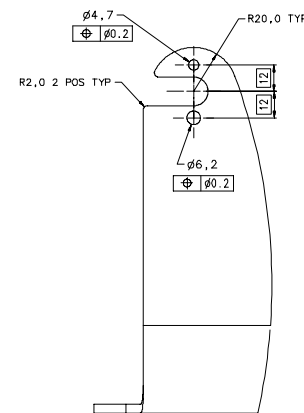
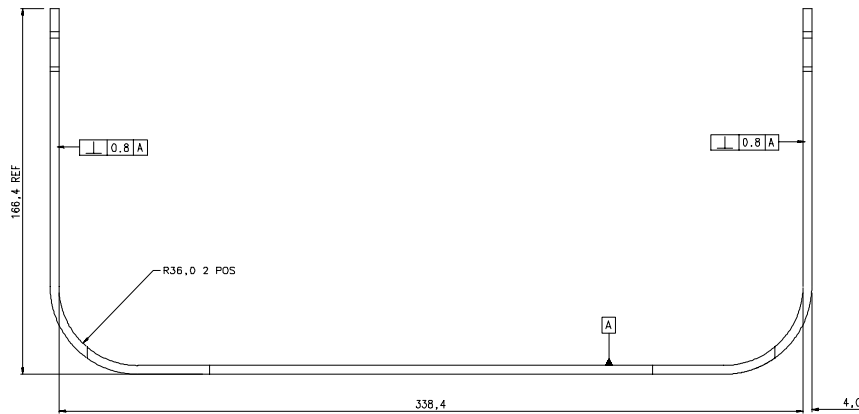
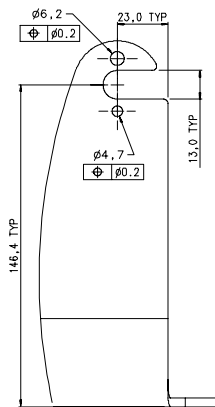
H

NOTES:

- 1. FINISH TO BE ALOCROM 1200 AND POWDER COAT MATT BLACK
- 2. THIS DRAWING SUPPLIED IN ELECTRONIC FORMAT AS 3036260A.dwg IS THE "MASTER DOCUMENT". DXF DATA AVAILABLE ON REQUEST. MUST BE VERIFIED TO THE MASTER SUPPLIED. LAST IGS DATA SUPPLIED: 3036260A.IGS.
- 3. REFER TO 3D MODEL FOR UNSPECIFIED DIMENSIONS.



PICTORIAL VIEW



ITEM No	DWG/PART No	QTY	DESCRIPTION
1			PARTS LIST

2

3

4



THE INFORMATION CONTAINED HEREIN SHALL NOT BE REPRODUCED IN WHATEVER MANNER WITHOUT THE PRIOR WRITTEN PERMISSION OF RAYMARINE LTD

TOLERANCES UNLESS OTHERWISE STATED:
X -X ±0.50 MACHINING SURFACE
-X ±0.25 SURFACE
XXX ±0.10 SHARP INTERNAL CORNERS
X ±0.50 TO HOLE DRILLS 0.4 MIN (EXCL. DRIFT)
DEBURR ALL EDGES
DIMENSIONS IN MM SCALE: 1:1

DRAWN TO BS308 DO NOT SCALE - IF IN DOUBT ASK
MATERIAL: ALUMINIUM ALLOY 5251 H24
FINISH: SEE NOTES

DRW: R.P.S
DATE: 09.09.03
DWD: A.S
APP'D: R.S.A.

TITLE: TRUNION BRACKET, C120
DRAWING No.
3036-260
SHEET 1 OF 1

B	RE-QUALIFIED FOR OUTSOURCING	16.09.05
B	DISTANCE BETWEEN BRACKET UPRIGHTS (BOTH SET SPACING) AMENDED.	12.09.04
A	FIRST ISSUE	23.10.03
ISS	DESCRIPTION OF CHANGE	ORIGINAL
		DATE

1

2

3

4

5

6

7

8